

BEDROOM 1
9' 1" X 10' 5"

BEDROOM 2
12' 5" X 10' 7"

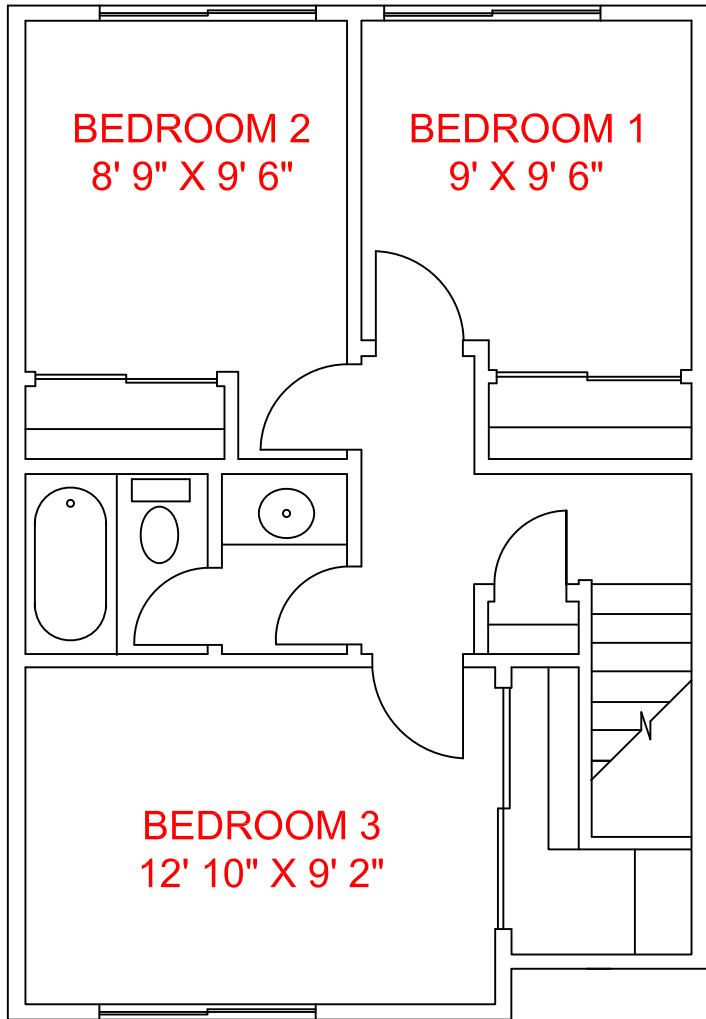
KITCHEN

DINING

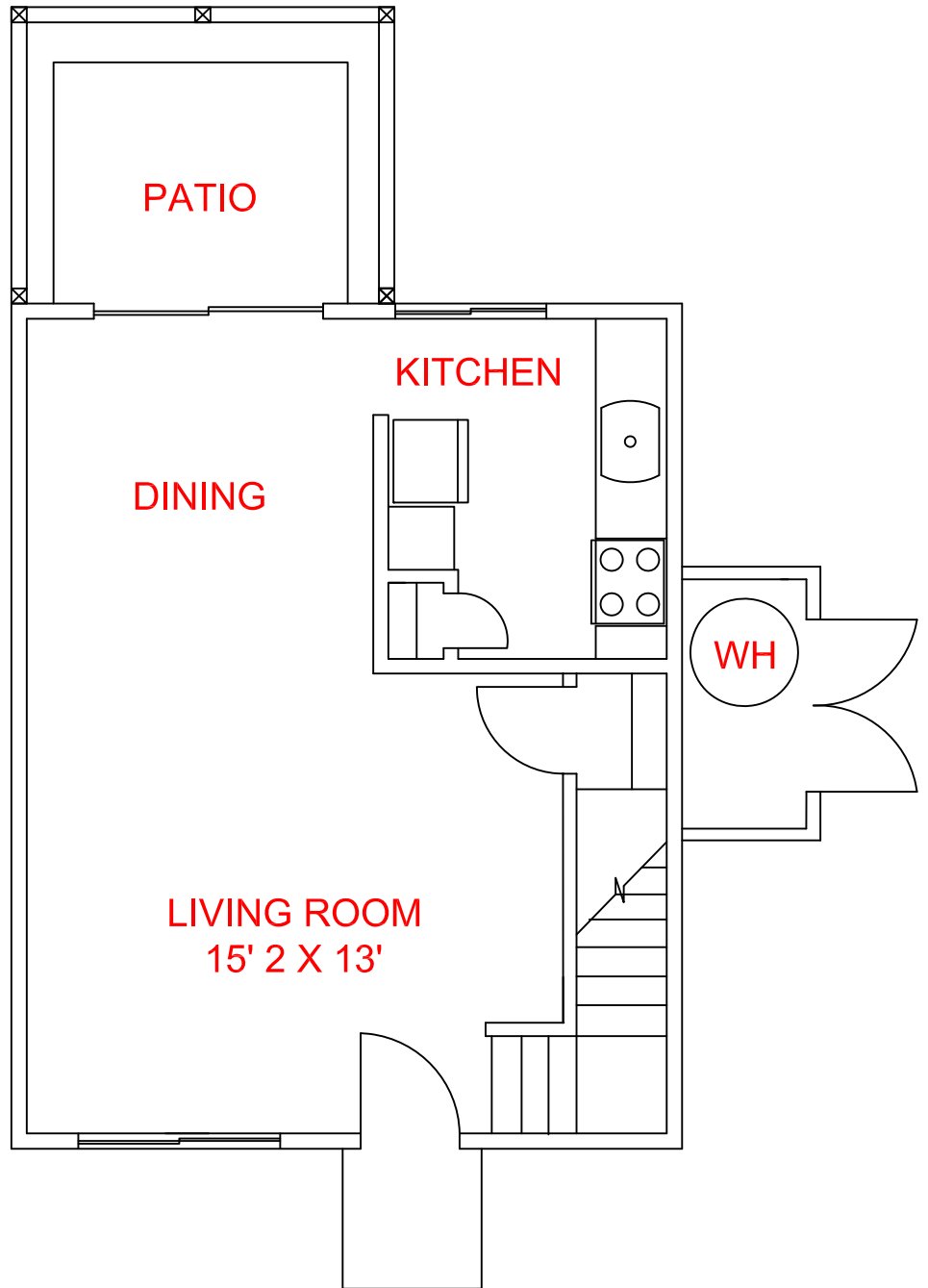
LIVING ROOM
12' 2" X 15' 1"

PATIO

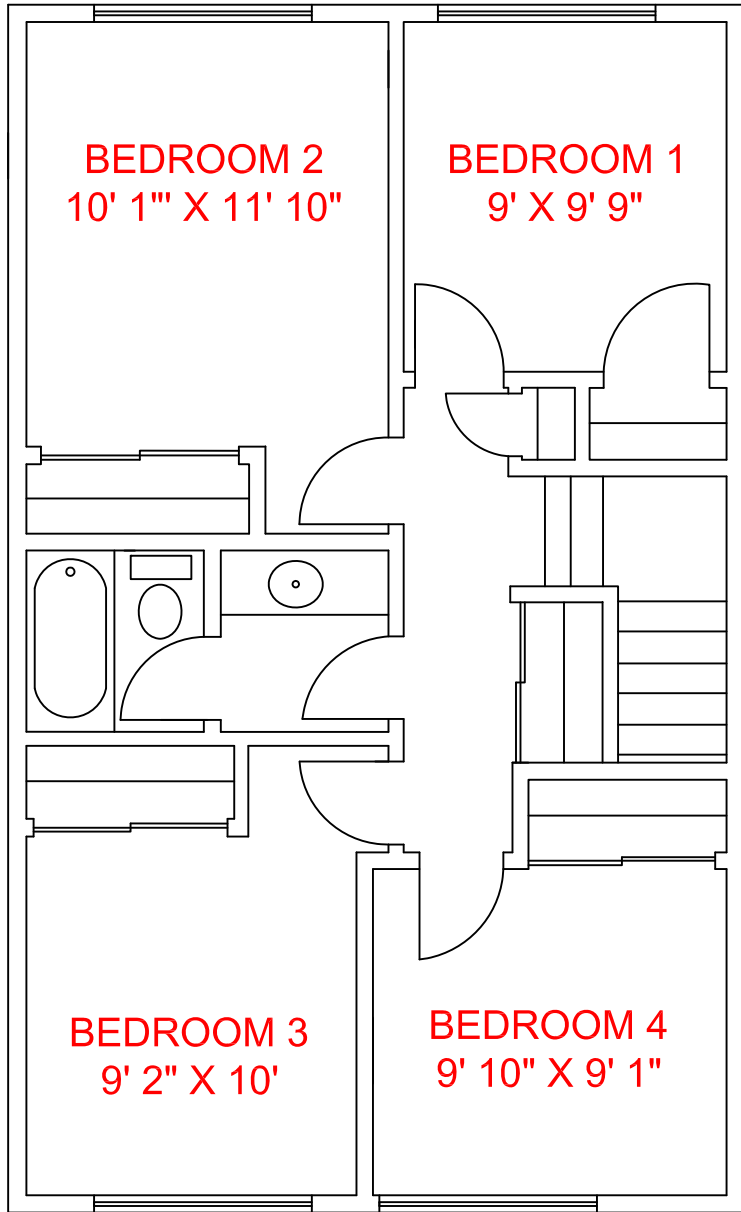
TYPE B 2 BEDROOM
FIRST FLOOR



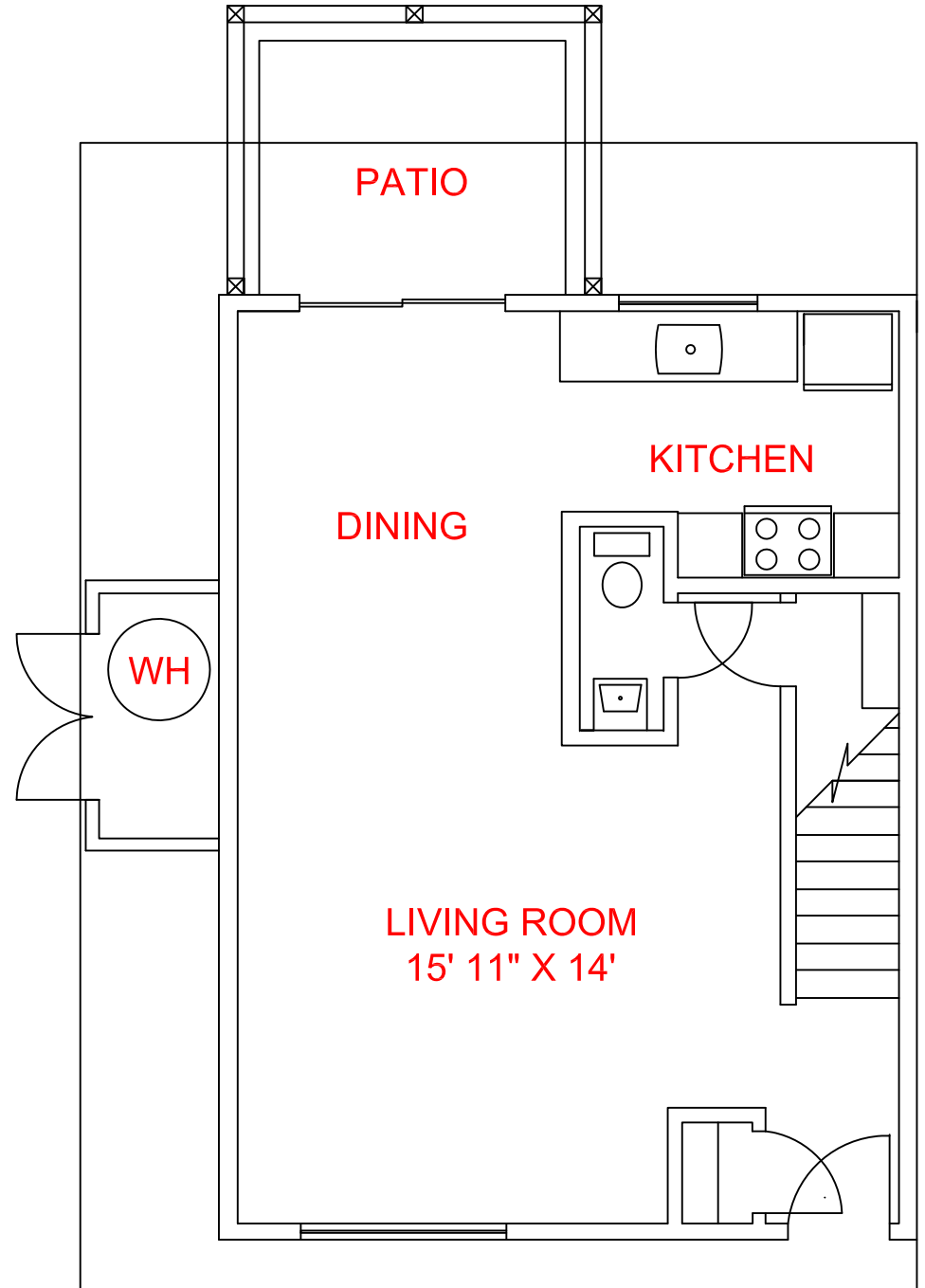
TYPE C 3 BEDORRM
SECOND FLOOR



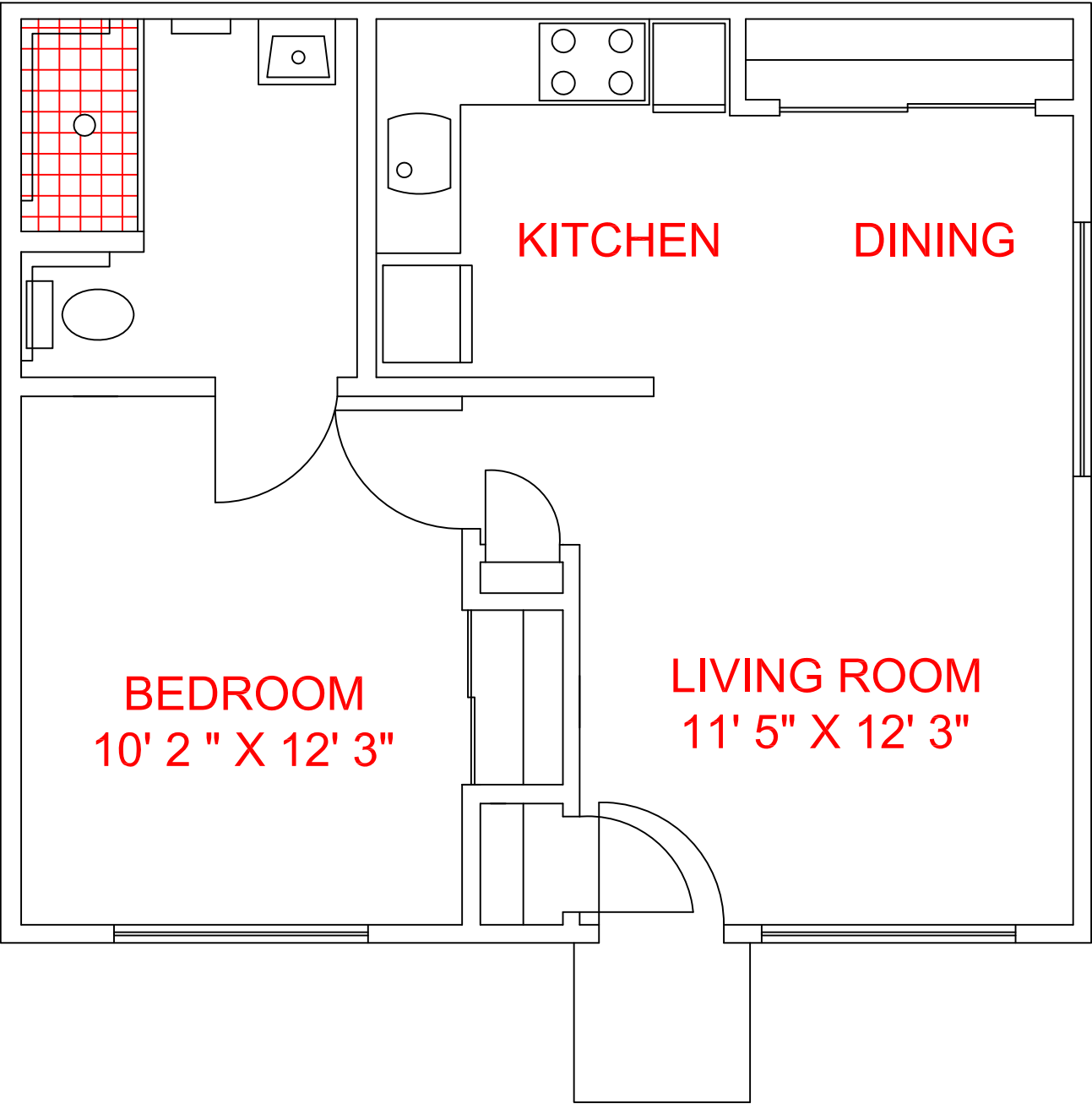
TYPE C 3 BEDORRM
FIRST FLOOR



**TYPE D 4 BEDROOM
SECOND FLOOR**



**TYPE D 4 BEDROOM
FIRST FLOOR**



BEDROOM
10' 2 " X 12' 3"

KITCHEN

DINING

LIVING ROOM
11' 5" X 12' 3"

**TYPE E 1 BEDROOM ACCESSIBLE
FIRST FLOOR**